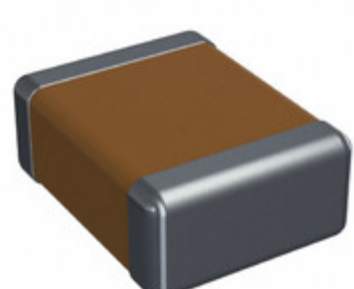


CDR33BX223BMZMAT



Part Number: [CDR33BX223BMZMAT](#)
Manufacturer: [Electro-Films \(EFI\) / Vishay](#)
Description: CAP CER 0.022UF 100V 20% BX 1210
Data sheet: [CDR Series \(MIL-PRF-55681\)](#)

RoHS Status: Contains lead / RoHS non-compliant
Ship From: Hong Kong
Shipment Way: DHL/Fedex/TNT/UPS/EMS

Images are for reference only.
 See Product Specifications for product details.
 Buy CDR33BX223BMZMAT with confidence from
 Component-World.HK, 1 Year Warranty

[Request For Quotation](#)

PRODUCT PARAMETER

Part Number	CDR33BX223BMZMAT	Manufacturer	Electro-Films (EFI) / Vishay
Description	CAP CER 0.022UF 100V 20% BX 1210	Lead Free Status / RoHS Status	Contains lead / RoHS non-compliant
Quantity Available	138805 pcs	Data sheet	CDR Series (MIL-PRF-55681)
Category	Capacitors	Voltage - Rated	100V
Tolerance	±20%	Thickness (Max)	0.049" (1.25mm)
Temperature Coefficient	BX	Size / Dimension	0.126" L x 0.098" W (3.20mm x 2.50mm)
Series	Military, MIL-PRF-55681, CDR33	Ratings	-
Packaging	Tape & Reel (TR)	Package / Case	1210 (3225 Metric)
Other Names	CDR33BX223BMZMAT-MIL	Operating Temperature	-55°C ~ 125°C
Mounting Type	Surface Mount, MLCC	Moisture Sensitivity Level (MSL)	1 (Unlimited)
Manufacturer Standard Lead Time	32 Weeks	Lead Style	-
Lead Spacing	-	Lead Free Status / RoHS Status	Contains lead / RoHS non-compliant
Height - Seated (Max)	-	Features	-
Failure Rate	M (1%)	Detailed Description	0.022µF ±20% 100V Ceramic Capacitor BX 1210 (3225 Metric)
Capacitance	0.022µF	Applications	General Purpose

Component-World.com is a Reliable Stocking Distributor of Electronic Components. We specialize in all Electro-Films (EFI) / Vishay series electronic components. We have 138805 pieces of Electro-Films (EFI) / Vishay CDR33BX223BMZMAT in stock available now. Request a quote from electronics components distributor at Component-World.com, our sales team will contact you within 24 hours.
 RFQ Email: info@Components-World.com

RELATED PRODUCTS

	Part#: CDR33BX223BKZPAB Description: CAP CER 0.022UF 100V BX 1210	Manufacturers: Electro-Films (EFI) / Vishay	RFQ
	Part#: CDR33BX273BKUSAR Description: CAP CER 0.027UF 100V BX 1210	Manufacturers: Electro-Films (EFI) / Vishay	RFQ
	Part#: CDR33BX273BKUSAT Description: CAP CER 0.027UF 100V BX 1210	Manufacturers: Electro-Films (EFI) / Vishay	RFQ
	Part#: CDR33BX223BKZMAT Description: CAP CER 0.022UF 100V 10% BX 1210	Manufacturers: Electro-Films (EFI) / Vishay	RFQ
	Part#: CDR33BX223BKWRAB Description: CAP CER 0.022UF 100V BX 1210	Manufacturers: Electro-Films (EFI) / Vishay	RFQ
	Part#: CDR33BX273BKWRAJ Description: CAP CER 0.027UF 100V BX 1210	Manufacturers: Electro-Films (EFI) / Vishay	RFQ
	Part#: CDR33BX223BMZRAT Description: CAP CER 0.022UF 100V 20% BX 1210	Manufacturers: Electro-Films (EFI) / Vishay	RFQ
	Part#: CDR33BX223BKZSAT Description: CAP CER 0.022UF 100V 10% BX 1210	Manufacturers: Electro-Films (EFI) / Vishay	RFQ
	Part#: CDR33BX223BKWSAR Description: CAP CER 0.022UF 100V BX 1210	Manufacturers: Electro-Films (EFI) / Vishay	RFQ
	Part#: CDR33BX273BKWRAB Description: CAP CER 0.027UF 100V BX 1210	Manufacturers: Electro-Films (EFI) / Vishay	RFQ
	Part#: CDR33BX223BKZPAT Description: CAP CER 0.022UF 100V 10% BX 1210	Manufacturers: Electro-Films (EFI) / Vishay	RFQ
	Part#: CDR33BX223BKWSAB Description: CAP CER 0.022UF 100V BX 1210	Manufacturers: Electro-Films (EFI) / Vishay	RFQ
	Part#: CDR33BX223BMZSAT Description: CAP CER 0.022UF 100V 20% BX 1210	Manufacturers: Electro-Films (EFI) / Vishay	RFQ
	Part#: CDR33BX223BKWSAT Description: CAP CER 0.022UF 100V BX 1210	Manufacturers: Electro-Films (EFI) / Vishay	RFQ
	Part#: CDR33BX273BKUSAJ Description: CAP CER 0.027UF 100V BX 1210	Manufacturers: Electro-Films (EFI) / Vishay	RFQ
	Part#: CDR33BX273BKUSAB Description: CAP CER 0.027UF 100V BX 1210	Manufacturers: Electro-Films (EFI) / Vishay	RFQ
	Part#: CDR33BX223BKZRAT Description: CAP CER 0.022UF 100V 10% BX 1210	Manufacturers: Electro-Films (EFI) / Vishay	RFQ
	Part#: CDR33BX273BKUS7185 Description: CAP CER 0.027UF 100V BX 1210	Manufacturers: KEMET	RFQ
	Part#: CDR33BX223BKWSAJ Description: CAP CER 0.022UF 100V BX 1210	Manufacturers: Electro-Films (EFI) / Vishay	RFQ
	Part#: CDR33BX223BMZPAT Description: CAP CER 0.022UF 100V 20% BX 1210	Manufacturers: Electro-Films (EFI) / Vishay	RFQ

Related keywords for CDR33BX223BMZMAT

Electro-Films (EFI) / Vishay CDR33BX223BMZMAT	CDR33BX223BMZMAT distributor	CDR33BX223BMZMAT supplier	CDR33BX223BMZMAT price
CDR33BX223BMZMAT download datasheet	CDR33BX223BMZMAT datasheet	CDR33BX223BMZMAT stock	buy CDR33BX223BMZMAT
Electro-Films (EFI) / Vishay CDR33BX223BMZMAT	Electro-Films (EFI) / Vishay CDR33BX223BMZMAT	Vishay Electro-Films CDR33BX223BMZMAT	Phoenix Passive Components / Vishay CDR33BX223BMZMAT